

# WINDCHILL CAPABILITIES

HCL has been at the forefront of delivering industry wide solutions and helping customers achieve their business & product realization goals. By implementing tailored processes oriented towards industry specific standards, HCL has facilitated customers to leverage their business using PTC Windchill suite of products and aligning themselves to digitization.

## Multifaceted relationship with PTC

### Services and Solutions partnership

- Global SI partnership for services
- ThingWorx partner

### Gold partnership for our products and technologies

- DFMPPro®
- GeomCaliper®
- PLM interoperability adapter for Windchill

### Joint SLM partnership for combined offerings

- Asset management
- Service parts information and technical information
- Service parts management
- Service network management
- IoT based solutions
  - Axeda and ThingWorx
  - Connected services

## End-to-end Services & Solutions

### CONSULTING

- Operational excellence
- Deployment excellence
- ROI improvement
- Alignment to industry best practices
- Strategy road map development

### IMPLEMENTATION

- Solution architecture & design
- Configuration & customization
- KPI driven business objectives definition and tracking
- Enterprise integrations & assessment

### CONSOLIDATION

- Windchill migration
- Windchill upgrade
- Migration methodology and process
- Data analysis and classification
- Customization upgrade
- Legacy customization migration

### SUPPORT & MAINTENANCE

- Preventive maintenance
- System health checks
- Recommend patches and fixes
- Database health checks and maintenance
- System administration
- User adoption

## Close to two decades of expertise across diverse industries



Automotive



A&D



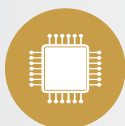
Industrial



Hi-Tech



Wind Turbines



Semiconductor



Life Sciences



Retail



Electrical

# HCL Center-of-Excellence - PTC PLM

## CAPABILITIES

- Dedicated center of excellence for Windchill
- PTC certified Windchill consultants
- Well defined competency frameworks across streams and technology
- PTC academy for training of resources & continuous competency development programs
- Well defined and mature competency frameworks such as data migration framework, maturity assessment framework across streams and technology
- PTC PLM CoE for continuous technology upgrade and central repository of business knowledge



## PTC PLM TOOLS COMPETENCY

- |  |   |
|--|---|
| <ul style="list-style-type: none"><li>• PDMLink   MPMLink   PartsLink</li><li>• Windchill SUMA</li><li>• Windchill ProjectLink</li><li>• Windchill Quality Solutions</li><li>• Windchill Product Analytics</li></ul> | <ul style="list-style-type: none"><li>• FlexPLM</li><li>• CREO Suite</li><li>• Servigistics</li><li>• Arbortext</li><li>• Thingworx</li><li>• ALM Integrity</li></ul> |
|--|---|
- 
- Warranty and contract management (formerly 4CS)
  - Field service management (Legacy support)
  - In-service (Formerly enigma)
  - TI / SPI – Technical Information / Service Parts Information
  - Servigistics - SPM
  - Service network management

## Customer Success



### A leading Indian lift truck manufacturer

Improved product development efficiencies by **15%** through Integration of Forklift engineering processes into PLM



### A leading European retail & fashion industry

Business processed re-engineering and application support helped the customer improve system performance by **35%** and overall cost savings up to **1M USD**



### A leading North American oil & gas equipment manufacturer

Improved resolution time for critical issues by **50%** and maintained SLA adherence above **96%** through qualitative engineering application support for PTC products



Hello, I'm from HCL's Engineering and R&D Services. We enable technology led organizations to go to market with innovative products and solutions. We partner with our customers in building world class products and creating associated solution delivery ecosystems to help bring market leadership. We develop engineering products, solutions and platforms across Aerospace and Defense, Automotive, Consumer Electronics, Software, Online, Industrial Manufacturing, Medical Devices, Networking & Telecom, Office Automation, Semiconductor and Servers & Storage for our customers.

Geometric is now a part of HCL Technologies

For more details contact: [geometricplm@hcl.com](mailto:geometricplm@hcl.com)

Visit our website: <http://geometricglobal.com/plm-services-and-solutions/plm>