



Geometric

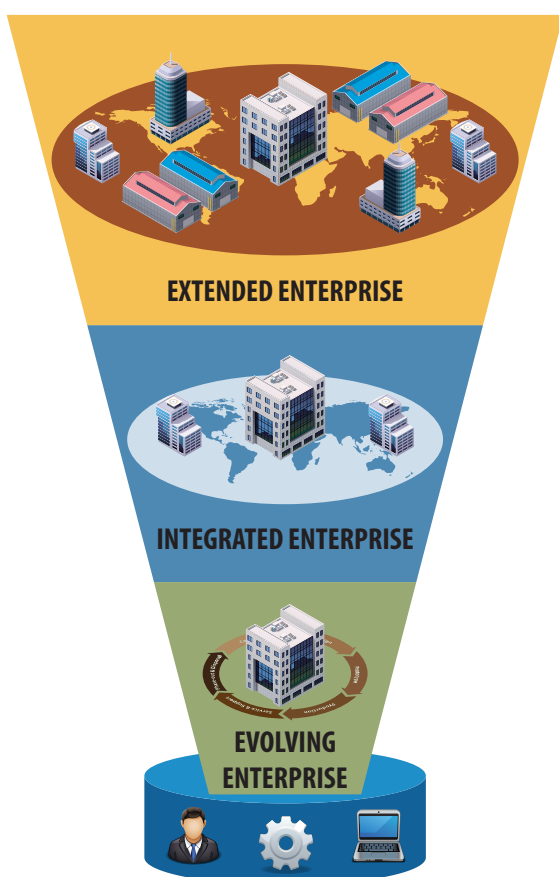
People Building Partnerships

# IMPROVING THE VALUE OF OUR CUSTOMERS' PLM INVESTMENTS

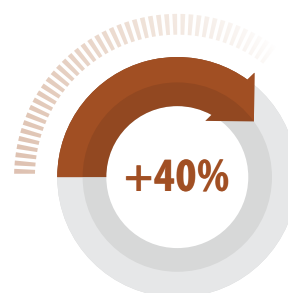
*A gap is widening between the projected value and the realized benefits of PLM systems. Deeper analysis reveals an inconsistent alignment of enterprise value elements: processes are not aligned with business needs, technology is not supporting processes, and key personnel are not adopting implemented solutions. As organizations evolve, an accompanying shift must also take place in PLM value realization strategies.*

*Geometric's PLM+ offering provides PLM services and solutions to help enterprises seamlessly embrace the shift and systematically enhance PLM business value.*

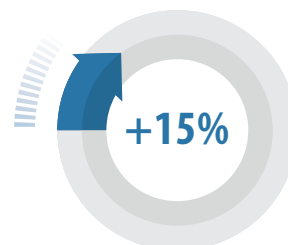
## Realized Customer Impact



Improved Data Exchange  
between Partners to Realize  
Collaboration Benefits



Improvement in Quality through  
Concurrent Engineering



Reduction in Engineering  
Release Cycle Time



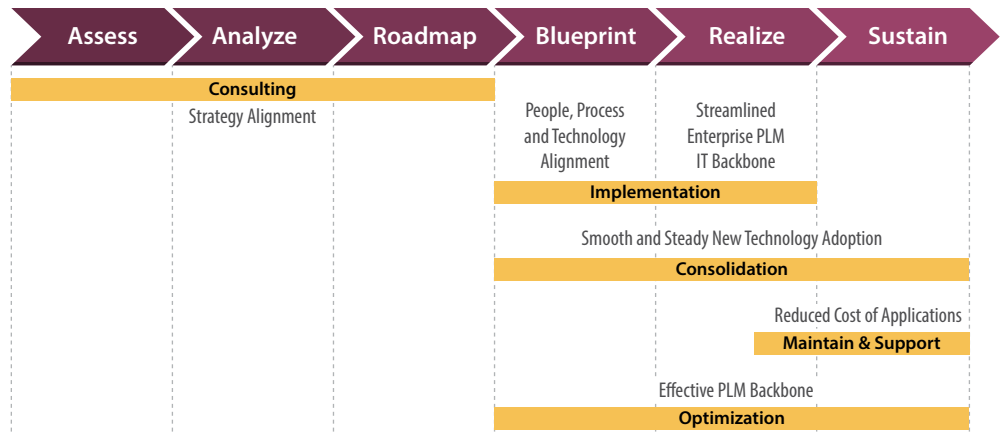
## Geometric Advantage

- *Recognized industry thought leaders at the forefront of defining advancements in PLM*
- *Unrivalled PLM focus and industry best in class knowledge – over two decades of exclusive PLM experience and 16000+ person years of PLM expertise*
- *Deep expertise in next generation PLM platforms and knowledge of product roadmaps driven by strategic product development relationships with leading PLM ISVs*
- *Vendor neutral trusted advisor in a heterogeneous PLM tools landscape*
- *Synergistic strengths in cross functional PLM, manufacturing and electronics processes*
- *Strong reusable technology innovations across the value chain*

## PLM+

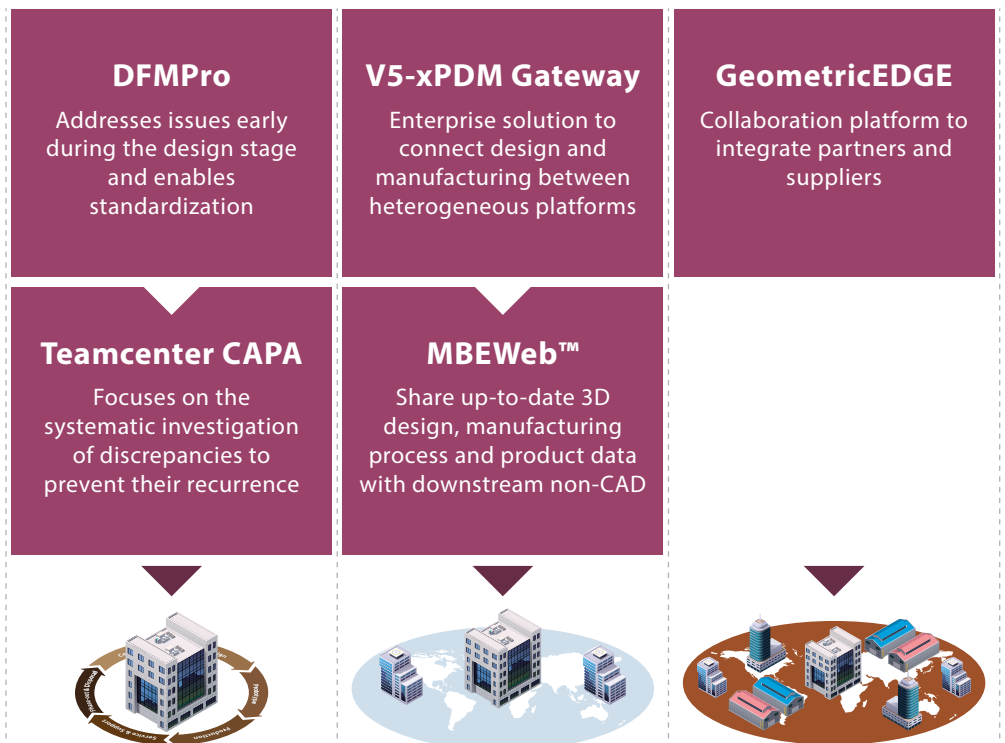
Geometric's PLM+ offering enables enterprises to seamlessly navigate the shift in PLM strategies and systematically enhance PLM business value at differing maturity levels and evolution. With PLM+, you can reduce or eliminate the risk of rising costs, missed market opportunity windows and quality issues associated with the evolution of your PLM strategy. Continue to grow and evolve leveraging the power of PLM without the worry of negatively impacting your business.

The offering uses industry best practices in process improvement, technology implementation, program management, organizational change management, and PLM technology solutions, helping bridge existing or developing value gaps in your Product Lifecycle Management strategy. PLM+ has been developed and fine-tuned with over 20 years of experience in evolving customers' PLM strategies and a deep understanding of various industry processes.



## Solutions

Strong technology innovations across the enterprise evolution stages



**Geometric**

People Building Partnerships

## About Geometric

Geometric is a specialist in the domains of engineering solutions, services and technologies. Its portfolio of Global Engineering services, Product Lifecycle Management (PLM) solutions, Embedded System solutions, and Digital Technology solutions enables companies to formulate, implement, and execute global engineering and manufacturing strategies aimed at achieving greater efficiencies in the product realization lifecycle. Geometric employs over 4800 people across 13 global delivery locations in US, France, Germany, Romania, India and China.

*The copyright/ trademarks of all products referenced herein are held by their respective companies.*